

FileTrail's RFID RF-Enterprise

The Most Configurable RFID Middleware for the Office Environment

Introduction

RF-Enterprise is a browser-based application that manages hardware, configuration, and transactions across the solution. It also manages Windows Server services that perform critical monitoring and communications with RFID devices. It is a scalable system with many sophisticated capabilities and features.

Capabilities

Remote Configuration

RF-Enterprise provides complete virtual control over RFID readers and sensors. Basic options are automatically set when a new reader is acquired—advanced options can be adjusted within the user interface. This eliminates the need to access the physical device, allowing placement above the ceiling or under work-surfaces to be more convenient.

Browser Technology

RF-Enterprise is browser-based and requires no installation at any desktop. This allows access to adjust options near the location of sensors, which makes it easier to fine-tune or relocate sensors to a new location.

Self-Healing

RF-Enterprise continually tests RFID devices to ensure that they are up and running. It attempts to re-boot and re-test readers that fail up to ten times. If all attempts fail an email alert is sent.

Common Platform

When used with FileTrail RM or FileTrail for SharePoint, the combination provides a common user interface for search, request, security, etc., to track many different types of items. And, the integration is seamless and automatic, eliminating the need to develop integration with 3rd-party applications.

Scalability

RF-Enterprise is scalable to support hundreds of readers across any number of physical locations. You can also implement multiple installations in remote locations to reduce the network traffic between locations.

Easy Integration

RF-Enterprise allows you to add the power of RFID to existing systems. The RF-Integrator provides a comprehensive Web Services library for easy integration. Any system that uniquely identifies physical items to be tracked can be integrated, including tracking systems, asset management systems, financial/ERP systems, ECM, and others. FileTrail provides RFID tags and equipment especially suited for tracking:

- ▶ Paper documents
- ▶ Electronic media
- ▶ IT assets
- ▶ Furniture
- ▶ Equipment
- ▶ Evidence
- ▶ Firearms

Collaborative Intelligence

When RF-Enterprise is implemented with FileTrail Professional – FileTrail's tracking software – the two applications collaborate to make intelligent decisions. For example, when you box files for storage and transmit to the archive location you want to be able to cart them down the hall and take them to storage without being read at certain doorways that would normally check the files out of the box and into that location. Collaborative Intelligence prevents that, and similar mistakes, from occurring (May not be available in 3rd-party integrations, or may add additional development expense.)



The management tree provides quick access to configuration tools, expandable to thousands of zones, readers, etc.



RF-Enterprise automates monitoring, adjustment and communication with RFID devices on your Ethernet network.

FileTrail's RFID RF-Enterprise

The Most Configurable RFID Middleware for the Office Environment

Functions

Alarm

RF-Enterprise accommodates configuration of business rules to drive exit alarms. Any combination of lights, sounds or emails can be set to activate when a violation of rules occurs (Not available in 3rd-party integrations.)

Reporting

RF-Enterprise provides summary and detail reporting on hardware and definitions of zones and locations. In addition, a nightly status report summarizes the operation, calling attention to readers and sensors that have not read tags recently. This report can be configured to automatically email to one or more people.

Verification

RF-Enterprise allows verification settings to be configured for any location. This prevents irrelevant events from being recorded at locations with that risk. For example, a sensor at a cubicle will automatically check out items as they arrive there, including those items carried by someone who stops by to say "hello." Verification allows those items that don't remain in the cubicle for a period of time to be ignored.

Threshold

RF-Enterprise allows a time threshold to be configured for any location. This prevents a passive RFID check-out from overriding a recent manual check-out (Not available in 3rd-party integrations.)

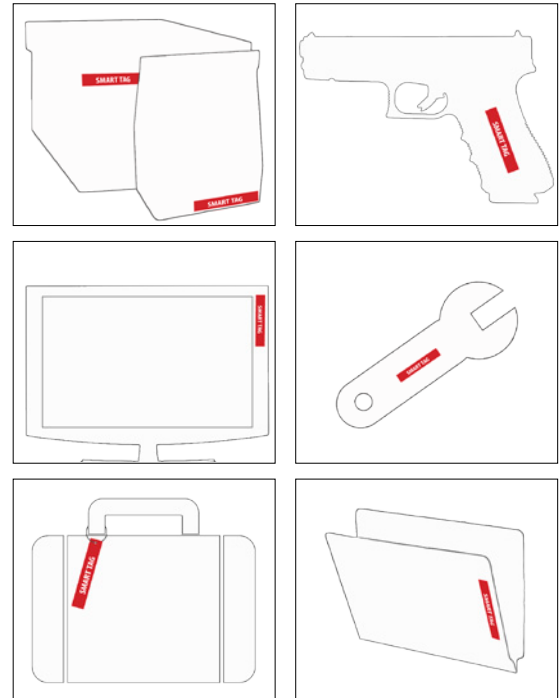
Tag Monitor

The tag monitor allows monitoring of tag data in real-time as it is being collected by RF-Enterprise. Filtering by reader, zone, status, verification, or specific tag values makes the tag monitor a valuable tool for checking performance and fine-tuning placement, power levels and other options.

FileTrail RF-Enterprise Error Notification
Report created on 3/13/2010 5:29:42 AM

Reader Status				
Reader	MAC Address	IP Address	Status	Last Read
Alarm Exit - Maryland Avenue	01:3E:5F:00:02:10	192.68.208.40	OK	3/13/2010 5:29:41 AM
Alarm Exit - Monroe Street	01:3E:5F:00:04:24	192.68.208.41	OK	3/13/2010 5:29:38 AM
Central Files Check-In	01:3E:5F:00:05:81	192.68.208.42	OK	3/13/2010 5:29:12 AM
Civil Dept - Reader 01	01:3E:5F:00:0A:90	192.68.208.47	NOTE: AutoMode was OFF - Reset	3/13/2010 3:29:40 PM (24 hours ago)
Civil Dept - Reader 02	01:3E:5F:00:0B:DC	192.68.208.49	OK	3/13/2010 5:29:39 AM
Courtroom Clerks Entrance	01:3E:5F:00:0C:08	192.68.208.50	ERROR: No IP Address from DHCP.	3/12/2010 4:16:43 PM (27 hours ago)
Crim Dept - Reader 01	01:3E:5F:00:0B:56	192.68.208.51	OK	3/13/2010 5:29:38 AM
Crim Dept - Reader 02	01:3E:5F:00:0B:75	192.68.208.52	OK	3/13/2010 5:29:40 AM
Crim Dept - Reader 03	01:3E:5F:00:0B:13	192.68.208.54	OK	3/13/2010 5:29:40 AM
Family Dept - Reader 01	01:3E:5F:00:0B:8F	192.68.208.55	OK	3/13/2010 5:29:41 AM
Family Dept - Reader 02	01:3E:5F:00:09:64	192.68.208.56	OK	3/13/2010 5:29:41 AM

RF-Enterprise generates nightly status reports and email alerts to flag problems with RFID devices, simplifying administration of large systems with hundreds of readers.



A FileTrail provides RFID tags especially suited for tracking paper documents, electronic media, IT assets, furniture, equipment, evidence, and weapons.