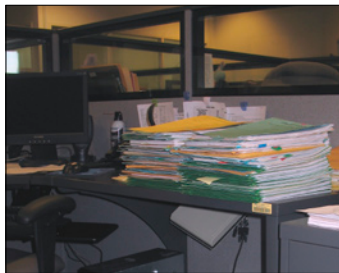


FileTrail's RFID SmartSensor

The FileTrail SmartSensor is a light-weight square pad that can be mounted under a work-surface or placed above a drop-ceiling. The SmartSensor connects to a 4-port or 2-port RFID Reader using light coax, up to 40-foot in length.

Uses:

▶▶ In Cubicles



Files are automatically tracked as they arrive for processing at a cubicle.

▶▶ At Doorways



Files are automatically tracked as they enter or leave a department by the doorway.

▶▶ In Offices



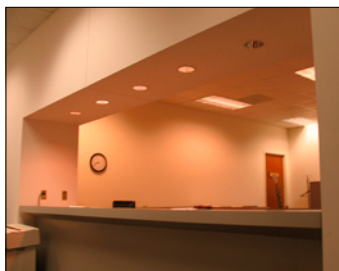
Files are automatically tracked as they arrive by sensors in the ceiling.

▶▶ At Returns Areas



Files are automatically checked in as they are dropped off for re-filing.

▶▶ At Public Counters

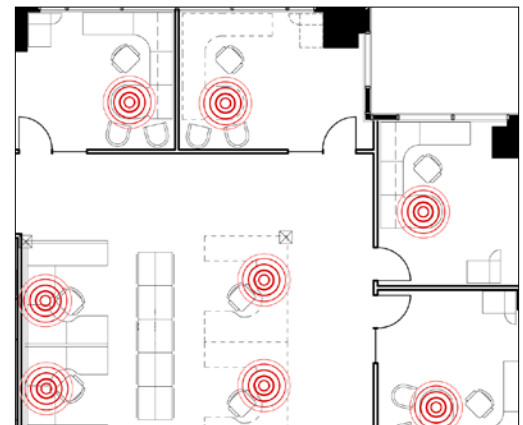


Files are automatically tracked as they arrive or leave by sensors under the counter or above the ceiling.

▶▶ At Exits



Business rules are evaluated to prevent unauthorized removal of items - lights, siren, and email may be used to alert.



FileTrail's RFID SmartSensor automatically tracks items as they move among cubicles, offices, and doorways.

Specifications:

Read Distance Adjustable, 6 inches to 20 feet

Purpose Engineered for office environment

Size 7.5 x 7.5 x 1.2 inches (191 x 191 x 30 mm)

Weight 2.2 lbs (998 grams)

Temperature Range -55 to +71° per IEC 68

Temperature Shock -40° to +71°C, 3 cycles 30°C/min

Humidity 95% per ETSI EN300

Flammability Class HB per UL-94

Cable Options:

Standard light-weight co-ax (world-wide use).

Plenum-rated light-weight co-ax for in-ceiling installation (world-wide use).